

# Michigan Frogs and Toads

Michigan has only thirteen of the more than 3,400 species of frogs and toads that can be found worldwide. The Michigan amphibians, which hatch from fish-like, gill-breathing larvae called tadpoles or polliwogs, live in moist or wet habitats. They gradually grow legs, lungs and other traits to allow them to breathe air and live on land. Michigan frogs and toads include: Western chorus frog, northern spring peeper, gray tree frog, eastern american toad, Fowler's toad, Blanchard's cricket frog, wood frog, northern leopard frog, pickerel frog, mink frog, green frog, and bull frog. Choose a Michigan frog or toad and research to fill in the graphic organizer below.

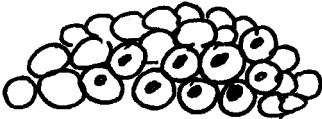
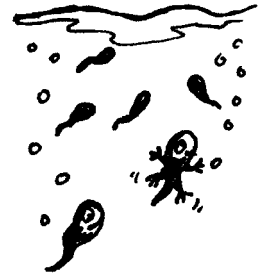
## SPECIES

Kind of frog or toad



## DESCRIPTION

Color the drawing below.  
Write size and other details.



## LIFE CYCLE

\_\_\_\_\_  
\_\_\_\_\_  
\_\_\_\_\_  
\_\_\_\_\_  
\_\_\_\_\_

## HABITS

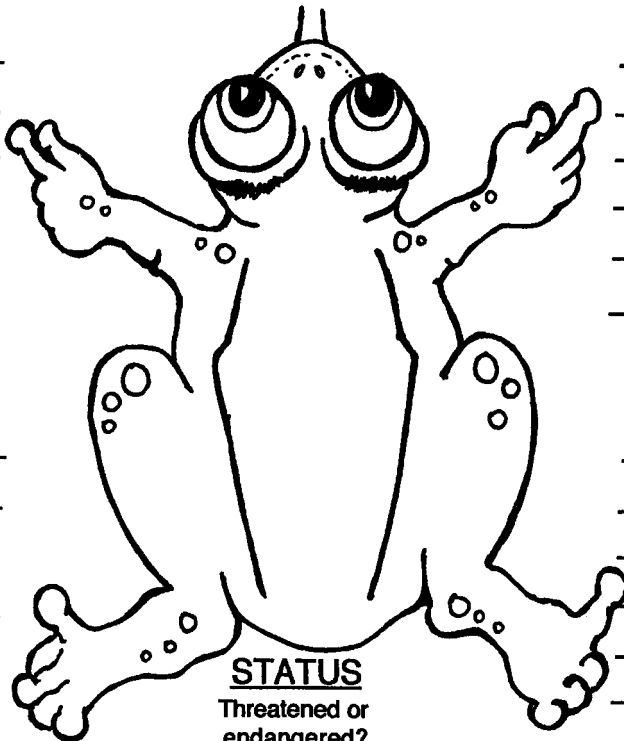
\_\_\_\_\_  
\_\_\_\_\_  
\_\_\_\_\_  
\_\_\_\_\_  
\_\_\_\_\_

## HABITAT

\_\_\_\_\_  
\_\_\_\_\_  
\_\_\_\_\_  
\_\_\_\_\_  
\_\_\_\_\_

## VOICE

\_\_\_\_\_  
\_\_\_\_\_  
\_\_\_\_\_  
\_\_\_\_\_  
\_\_\_\_\_



## STATUS

Threatened or endangered?

\_\_\_\_\_